

Pine Jog's Comprehensive Needs Analysis (CNA)



Step 3 - Stakeholder
Meeting
February 27, 2024



Welcome & Sign In

Take a moment to sign in

<https://forms.gle/pTuxL4scVhQ792gF8>



Table of contents



01

What is the CNA?

Why do we do it?

02

Data Review

What does our data tell us we need?

03

Leadership Input

What does the leadership team think we need?

04

Staff Input

What does the staff team think we need?

05

Stakeholder Input

What do YOU think we need?

01 What is the CNA?

It is a school wide process to...

- Connect with **stakeholders** about improvement
- Analyze our data and school wide **needs**
- Identify **barriers** that are within our control
- Determine **root causes** for the barriers
- Create an effective **school wide plan** for the upcoming year





The CNA



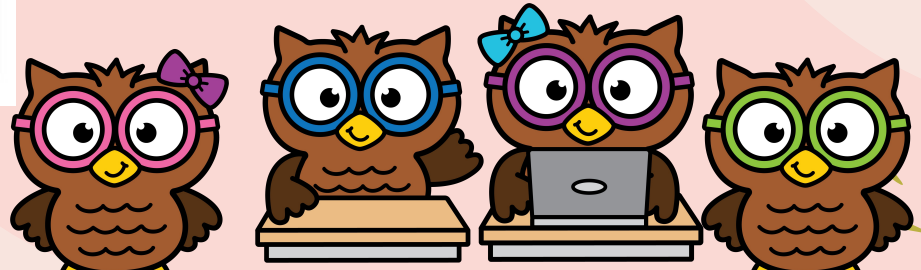
is required by Title I and guides some of our funding toward our School wide Plan (SWP). The suggestions we make today will be shared with our stakeholders.

5 Why's Root Cause Analysis Tool Template

State the problem	
Why?	
Why?	
Why?	
Why?	
Why?	
Probable Cause(s)	

As you Analyze...

1. State the problem (something we can control)
2. Get down to the Why's?
3. Identify a probable cause for the problem



02 Our Data Analysis

Should be used to...

- Create a **needs statement** in ELA, MATH, & Science
- List **root causes** connected to the the needs statement
- Share possible **solutions**
- Share ideas for **parent trainings** that support the subjects
- Consider **subgroups**



STAR Grade K to 2 Overall Performance ELA (Literacy & Reading)

PM1

- Kindergarten-50%
- First Grade- 46.3%
- Second Grade- 46%
- ELLs- 26%
- SWDs- 35.4%

PM2

- Kindergarten-58% (8%)
- First Grade- 55% (8.7%)
- Second Grade- 48% (2%)
- ELLs- 33% (7%)
- SWDs- 42% (6.6%)

STAR Grade K to 2 Overall Performance Math

PM1

- Kindergarten-66%
- First Grade- 77.3%
- Second Grade- 51%
- ELLs- 55.2%
- SWDs- 40%

PM2

- Kindergarten-64.1%(-1.9%)
- First Grade- 80% (2.7%)
- Second Grade- 63% (12%)
- ELLs- 54.2% (-1%)
- SWDs- 48% (8%)

FAST Grade 3 to 5 Overall Performance ELA Level 3 and Higher

PM1

- Grade 3-31%
- Grade 4-24%
- Grade 5-33%
- ELLs- 5%
- SWDs-0%

PM2

- Grade 3-41% (10%)
- Grade 4- 35% (11%)
- Grade 5- 42% (9%)
- ELLs- 9% (4%)
- SWDs- 0%

FAST Grade 3 to 5 Overall Performance Math Level 3 and Higher

PM1

- Grade 3-11%
- Grade 4-0%
- Grade 5-3%
- Grade 6-8%
- ELLs- 2%
- SWDs-0%

PM2

- Grade 3-23% (12%)
- Grade 4- 4% (4%)
- Grade 5-18% (15%)
- Grade 6- 81% (73%)
- ELLs- 8% (6%)
- SWDs- 0%

03

Leadership & Staff Input

Needs Analysis...

Our 4th, 2nd, ELL & ESE students are struggling to make progress across all subjects

WHY?

- Ratio of veteran vs. new teachers & ClinEd Teachers
- Change in curriculum & mandates
- Lack of paid planning/training/practice time
- Lack of subs to cover for planning
- 4th & subgroups still demonstrate COVID gaps
- Class sizes
- Lack of push-in support teachers
- Lack of PLC for ESE, Resource & ESOL
- Behaviors are impacting learning

Teacher
Recruitment &
Retention

Parent
Trainings &
Events



Possible Solutions

- ❁ schedule adjustments for ESOL / ESE Push-in
- ❁ training - MATH & SCIENCE
- ❁ coaches & SSCC
- ❁ K-2 SAI Math Resource/Coach
- ❁ teacher collaboration opportunities
- ❁ de-escalation training for ALL teachers
- ❁ major vs. minor behaviors training & support
- ❁ CHAMPS for new teachers training
- ❁ resources and materials for tutorial
- ❁ starting tutorial sooner
- ❁ academic tutors
- ❁ intervention materials: Voyager, RISE, SPIRE, UFLI
- ❁ positive behavior assemblies
- ❁ parent trainings
- ❁ adaptive technology resources - Reflex; Reading Plus; IXL, IReady
Magnetic Lessons
- ❁ supplies for classroom & tutorial
- ❁ AWARDS & Celebrations
- ❁ Parent trainings & school events



03

Stakeholder Input

Common Ideas & Threads

What Parent Trainings will support our Needs?



What are our common needs...

Our needs assessment statement will be created by combining team input for every subject



What are some common solutions...

Our possible solutions statements will be created by the combining team input for every subject



Reading & Writing Solutions

Solutions

Share possible solutions that address the root causes

Opportunities

List how stakeholders can support the needs statement

Parent & Family Engagement (PFEP)

How should the school strengthen the PFEP to support reading and writing?

- Communication with families
- ELA Parent Trainings?
- Staff Trainings?
- Accommodations?



Math Solutions

Solutions

Share possible solutions that address the root causes

Opportunities

List how stakeholders can support the needs statement

Parent & Family Engagement (PFEP)

How should the school strengthen the PFEP to support reading and writing?

- Communication with families
- MATH Parent Trainings?
- Staff Trainings?
- Accommodations?



Science Solutions

Solutions

Share possible solutions that address the root causes

Opportunities

List how stakeholders can support the needs statement

Parent & Family Engagement (PFEP)

How should the school strengthen the PFEP to support reading and writing?

- Communication with families
- ScienceParent Trainings?
- Staff Trainings?
- Accommodations?



Thank You! For your Time & Participation!
Complete the stakeholder evaluation before you go please.

<https://forms.gle/8ckTgk2t64wRuBph6>



LET ME KNOW

